

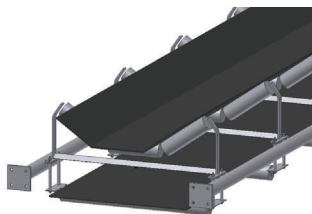


## MARCO'S NEW LONG DISTANCE CONVEYOR SYSTEM

MARCO was challenged by a customer to innovate on an old idea. How can we lower material transportation costs in our operation using conveyors. Channel frame conveyors have existed for years and they are used all over. How can something so fundamental be improved upon? MARCO did it by making installation easier. We designed it for cleaner operation and the frame is less expensive per foot than channel frame conveyor, **without** sacrificing the best ability to span distances in the industry.

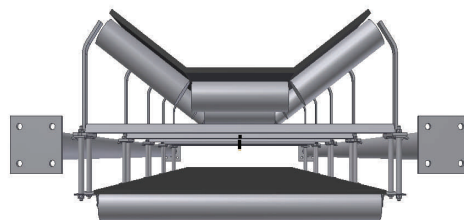
You can now make “going green” economically feasible. Conveying your material over longer distances is more cost effective and you address a popular move to minimize emissions. Our new frame can be hung from your ceiling in underground operations or it can be supported with supports in overland applications.

O  
V  
E  
R  
  
70+  
  
Y  
E  
A  
R  
S

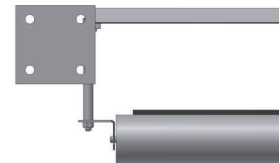


ANGLE VIEW

### MODEL 450



END VIEW



INCREASED BELT LIFE, BY INCREASED PULLEY WIDTH!



SIDE VIEW